



# CONSTRUCTION UPDATE

## SOUTH TERMINAL MODERNIZATION UNDERWAY

### CURRENT STATUS

The Port of Everett is on track for a January 2020 completion of the strengthening and extension of the South Terminal wharf, including rail and electrical upgrades. This Seaport Modernization project, the largest in the Port's history by dollar amount, will result in longer berths, stronger docks and increased rail capacity to meet the next generation of shipping and cargo demands, including aerospace parts for the new 777X and other cargoes.

### STRIKE DELAY

The project was delayed by a 17-day strike that began August 21, involving asphalt and cement plants and other construction operators. Advanced American Construction, contracted to complete the South Terminal Wharf Strengthening and Electrical Upgrades, halted work along with dozens of other western Washington construction sites until Associated General Contractors of Washington reached an agreement with International Union of Operating Engineers (IUOE) Local 302. The delay impacted the South Terminal project, however the January 2020 completion date is still expected to be met.

### PROJECT WORK HOURS

The project work hours are 7 a.m. - 10 p.m., Monday through Friday, with pile driving limited to 8 a.m. - 6 p.m. those days. Saturday, pile driving may be conducted during the entire work shift, 9 a.m. - 6 p.m.

Advanced American Construction received a noise variance from the City of Everett to work at night after 10 p.m. for work tidally dependent concrete work beginning mid-October. The variance does not include pile driving activity and is focused on the work

conducted underneath the wharf such as new pile caps and concrete pouring. Tidal influence beginning in the fall limits access to the work area every other week. The existing wharf's bottom elevation is below the high tides during the regular shift hours. The contractor will be using generators and concrete cutters. Their vehicle back-up alarms will be switched to a less intrusive sound. The noise is not expected to impact nearby neighborhoods because of the equipment in use and the work location.

### COMPLETED WORK

The Cargo Transit Shed was relocated from its original location near South Terminal dock to a position next to the terminal rail spur. The 39,600-square foot shed had been used for terminal maintenance and will now serve as covered storage as well as coverage for cargo unloading from rail. The restructured shed includes a cantilevered roof to extend over the rail cars for unloading cargo during inclement weather.

The Port also completed the railroad siding connection, increasing rail capacity by 60 cars with the connection of two new railroad sidings for a combined length of approximately 3,300 track feet.



### NOISE CONCERNS?

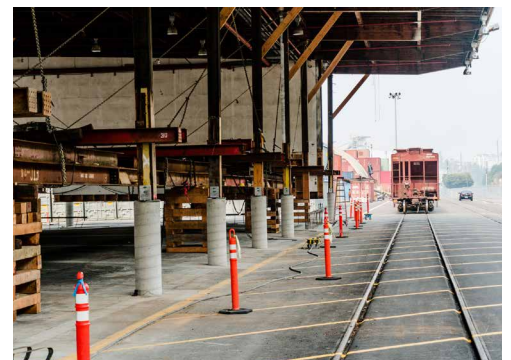
Call the Port of Everett's 24/7 Construction & Noise Hotline at 425.388.0269 or e-mail us at [publicaffairs@portofeverett.com](mailto:publicaffairs@portofeverett.com).



The South Terminal Wharf is being extended and strengthened to meet the next generation of shipping and cargo demands.



The railroad siding connection increased rail capacity by 60 cars, reducing mainline congestion.



The Cargo Transit Shed was moved from its original location near Berth 1. It now provides covered storage nearer the rail spur, also serving as protection for unloading rail cars during inclement weather.



STAY UPDATED DAILY!  
Follow the Port of Everett on  
Twitter, Facebook, YouTube & Instagram

LEARN MORE & STAY UP TO DATE ON THE PROJECT @  
[WWW.PORTOFEVERETT.COM](http://WWW.PORTOFEVERETT.COM)